

Discover the Newmar Difference.

1998 Dutch Star Motorhomes



1998 Dutch Star® Class A Motorhome



1998 Dutch Star® Diesel Pusher Motorhome

Specifications

By
Newmar

Discover the Dutch Star. 1998 Dutch Star Class A Motorhome

1998 STANDARDS

Air Conditioning & Heating

- Air Conditioner Central Brisk Air 15M BTU w/Heat Strip
- Heat In Floor Ducted
- LP Leak Detector

Appliances & Accessories

- Cable TV Connection
- Carbon Monoxide Detector
- CB Antenna
- Microwave Oven 22"
- Range Cover Laminated w/Matching Countertop Material
- Range Hood w/Light & Fan
- Range Recessed 3-Burner w/Black Glass Oven Door

- Refrigerator Dometic Double Door (8 cu. ft.)
- Satellite Dish Prep Only - w/RG 6 Coaxil, Phone/TV Jack & 110 Volt Recept
- Stereo AM/FM Cassette w/Clock (in dash)
- Telephone Connection w/1 Phone Jack
- TV Antenna w/Power Booster & 2 Jacks
- TV Color 19"
- TV Jack for Exterior Use on Door Side
- VCR Prep w/TV Video Switch
- Water Heater 6 Gal. Gas w/Direct Spark Ignition

Cabinets & Furniture

- Chair Flexsteel Swivel Barrel
- Countertop Extension (3256, 3450, 3455, 3658)

- Countertop Laminate w/Corian Edge & Porcelain Lavatory Bowl in Bath
- Countertop Solid Surface Material in Kitchen w/Corian Edge & Stainless Steel Sink
- Drawers w/Metal Guides & Side Rollers
- Front Seats Flexsteel Swivel/Recline w/3-Point Seat Belt
- Molded Silverware Divider Tray
- Oak Raised Panel Cabinet Doors
- Sofa Flexsteel

Chassis Features

- Chassis-Ford (460 CID Engine)
- Cruise Control
- Dash Heater/Air Conditioner High Output
- Steering Wheel Tilt
- Suspension Granning Tag Axle (3658)
- Wheel Simulators, Stainless Steel

Electrical Features

- Battery Disconnect (coach battery)
- Battery, Thermoil (2-12 volt) On Pull-out Tray
- Converter 75 AMP w/Charger
- Electrical Service 30 AMP
- Generator 4.0 KW Onan w/One Remote Switch
- Lights Driving
- Lights in Exterior Storage Compartments
- Solar Panel 5 Watt to Charge Chassis Battery
- Switch for Emergency Chassis Engine Start

Exterior Features

- Convex Exterior Mirrors w/Remote Control & Defrost, Front Mounted
- Exterior Front & Rear Gel-Coated Fiberglass End Caps
- Exterior Sides Gel-Coated Fiberglass
- Hitch
- Mud Flaps (front & rear)
- Roof & Top Wrap Rubber
- Roof Rack & Ladder
- Slideout Large w/Patented Flat Floor (see floorplans for availability & layout)
- Undercoating

Interior Features

- Bedspread Quilted w/Reversed Sham
- Decorative Wall Clock & Mirror
- Entrance Door Trimmed w/Hardwood
- Floor Covering, Carpet w/High Density Pad
- Floor Covering, High Pressure Laminated Simulated Plank in Kitchen Area
- Floor Covering, Vinyl in Bath
- Sink Cover, (1)
- Smoke Detector & 10 BC Fire Extinguisher
- Window Treatment Day/Night Pleated Shades & Lambrequins

Plumbing / Bath Features

- Bath Accessories White (2 towel bars, 1 tissue holder)
- Monitor Panel
- Sewage Holding Tank Rinse
- Sewage Hose Holder (easy access flop down tray)
- Shower Exterior (on off door side)
- Tub/Shower Surround w/Enclosure
- Winterize Convenience Package (w/water heater bypass)

Dutch Star® Class A Sizes and Capacities

Model	DA3205	DA3256	DA3401	DA3450	DA3451	DA3455	DA3656	DA3658
Approx. Overall Length	32'-11"	32'-11"	34'-11"	34'-11"	34'-11"	34'-11"	36'-11"	36'-11"
Overall Width	96"	96"	96"	96"	96"	96"	96"	96"
Approx. Overall Height	11'-5"	11'-5"	11'-5"	11'-5"	11'-5"	11'-5"	11'-5"	11'-5"
Interior Width	90-1/2"	90-1/2"	90-1/2"	90-1/2"	90-1/2"	90-1/2"	90-1/2"	90-1/2"
Interior Height	78"	78"	78"	78"	78"	78"	78"	78"
Grey Tank	40 Gal.	40 Gal.	40 Gal.	40 Gal.	40 Gal.	40 Gal.	40 Gal.	40 Gal.
Sewage Tank	40 Gal.	40 Gal.	40 Gal.	40 Gal.	40 Gal.	40 Gal.	40 Gal.	40 Gal.
Water Tank	45 Gal.	45 Gal.	45 Gal.	45 Gal.	45 Gal.	45 Gal.	45 Gal.	45 Gal.
L/P Tank	25 Gal.	25 Gal.	25 Gal.	25 Gal.	25 Gal.	25 Gal.	25 Gal.	25 Gal.
Furnace BTU	30,000	30,000	35,000	35,000	35,000	35,000	35,000	35,000

Lengths, Heights, Widths and Dry Weights are approximate.

Dutch Star® Class A Freightliner Chassis Specifications

Model	DA3205	DA3256	DA3401	DA3450	D3451	DA3455	DA3656	DA3658
Chassis	Freightliner	Freightliner	Freightliner	Freightliner	Freightliner	Freightliner	Freightliner	Freightliner
Engine	210 H.P.	210 H.P.	210 H.P.	210 H.P.	210 H.P.	210 H.P.	210 H.P.	210 H.P.
Axle Ratio	3.31	3.31	3.31	3.31	3.31	3.31	3.31	3.31
Fuel Cap	90 Gal.	90 Gal.	90 Gal.	90 Gal.	90 Gal.	90 Gal.	90 Gal.	90 Gal.
Wheel Base	200"	200"	216"	208"	208"	208"	228"	228"
Front GAWR	7,000 lbs.	7,000 lbs.	7,000 lbs.	7,000 lbs.	7,000 lbs.	7,000 lbs.	7,000 lbs.	7,000 lbs.
Rear GAWR	13,500 lbs.	13,500 lbs.	13,500 lbs.	13,500 lbs.	13,500 lbs.	13,500 lbs.	13,500 lbs.	13,500 lbs.
GVWR	20,500 lbs.	20,500 lbs.	20,500 lbs.	20,500 lbs.	20,500 lbs.	20,500 lbs.	20,500 lbs.	20,500 lbs.
GCWR*	25,500 lbs.	25,500 lbs.	25,500 lbs.	25,500 lbs.	25,500 lbs.	25,500 lbs.	25,500 lbs.	25,500 lbs.
Approx. Unloaded Vehicle Wt.	14,741 lbs.	15,571 lbs.	15,921 lbs.	15,985 lbs.	16,113 lbs.	15,949 lbs.	16,862 lbs.	16,831 lbs.
Approx. Net Carrying Cap.	5,759 lbs.	4,929 lbs.	4,579 lbs.	4,515 lbs.	4,387 lbs.	4,551 lbs.	3,638 lbs.	3,669 lbs.

Lengths, Heights, Widths and Dry Weights are approximate. * Hitch Rating 4000 lbs.

1998 OPTIONS

Approx. Weight

Appliances & Accessories

- Microwave Oven Convection 22" w/3-Burner Hot Plate 16 lbs.
- Rear View Monitor System 5 lbs.
- (2) 13.5M Penguin Air Conditioners w/Heat Strip, 6.5 Onan Generator & 50 AMP Electrical Service w/Flex Cord 128 lbs.

Cabinets & Furniture

- Built-in Booth Dinette w/Drawers, in Place of Free Standing Table/Chairs 23 lbs.
- Cabinetry Snow Maple w/Raised Panel Doors 0 lbs.
- Dinette Chairs Fixed, 2 Extra 20 lbs.
- Front Seat 6-Way Power on Driver's Side 16 lbs.
- Overhead Cabinet Added in Slideout 75 lbs.
- Sofa Flexsteel Hide-A-Bed in Place of Standard (except 3205, 3401) 52 lbs.

Chassis Features

- Optional Chassis-Chevy/(Vortec Engine)
- Optional Chassis-Freightliner Diesel (210 HP Engine)
- Spare Tire 100 lbs.

Electrical Features

- Lights Exterior Security (1 on each side) 2 lbs.

Exterior Features

- Jacks Hydraulic Leveling w/"Touch" Manual Control 172 lbs.

Windows, Awnings, & Vents

- Awning, Side A&E 8500 110 lbs.
- Windows Radius Safety Glass Double Pane, Dark Tinted (except driver/passenger area) 93 lbs.

Bedroom Features

- Bed Twins 75" 102 lbs.

Dutch Star® Class A Insulation "R" Values

Roof	Sidewalls	Floor
R12	R12	R11

Dutch Star® Class A Chevrolet Chassis Specifications

Model	DA3205	DA3256	DA3450	DA3451	DA3455
Chassis	Chev	Chev	Chev	Chev	Chev
Engine	454	454	454	454	454
Axle Ratio	4.63	4.63	4.63	4.63	4.63
Fuel Cap	75 Gal.	75 Gal.	75 Gal.	75 Gal.	75 Gal.
Wheel Base	200"	200"	208"	208"	208"
Front GAWR	5,500 lbs.	5,500 lbs.	5,500 lbs.	5,500 lbs.	5,500 lbs.
Rear GAWR	11,000 lbs.	11,000 lbs.	11,000 lbs.	11,000 lbs.	11,000 lbs.
GVWR	16,500 lbs.	16,500 lbs.	16,500 lbs.	16,500 lbs.	16,500 lbs.
GCWR*	21,000 lbs.	21,000 lbs.	21,000 lbs.	21,000 lbs.	21,000 lbs.
Approx. Unloaded Vehicle Wt.	13,900 lbs.	14,731 lbs.	15,096 lbs.	15,225 lbs.	15,091 lbs.
Approx. Net Carrying Cap.	2,600 lbs.	1,769 lbs.	1,404 lbs.	1,275 lbs.	1,409 lbs.

Lengths, Heights, Widths and Dry Weights are approximate. * Hitch Rating 4000 lbs.

1998 STANDARDS

Continued



Construction Features

- Insulation Fiberglass R7 Sidewalls, Floor & Roof
- Insulation Foam 5/8" Laminated in Sidewalls & Ceiling
- Structure, Aluminum Sidewalls & Roof, 16" on Center

Windows, Awnings & Vents

- Exterior Lighted Acrylic Assist Handle (at main entrance door)
- Skylight in Bathroom
- Step 12 Volt Automatic
- Vent 12 Volt in Bath Area w/Wall Switch
- Windows Radius Safety Glass Dark Tinted

Bedroom Features

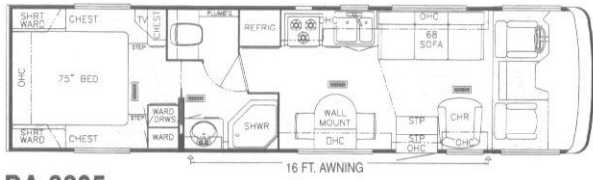
- Lifts for Convenient Storage Under Fixed Beds

Dutch Star® Class A Ford Chassis Specifications

Model	DA3205	DA3256	DA3401	DA3450	DA3451	DA3455	DA3656	DA3658
Chassis	Ford	Ford	Ford	Ford	Ford	Ford	Ford	Ford
Engine	460	460	460	460	460	460	460	460
Axle Ratio	5.13	5.13	5.13	5.13	5.13	5.13	5.13	5.13
Fuel Cap	75 Gal.	75 Gal.	75 Gal.	75 Gal.	75 Gal.	75 Gal.	75 Gal.	75 Gal.
Wheel Base	200"	200"	216"	208"	208"	208"	214"+Tag	214"+Tag
Front GAWR	6,000 lbs.	6,000 lbs.	6,000 lbs.	6,000 lbs.	6,000 lbs.	6,000 lbs.	6,000 lbs.	6,000 lbs.
Rear GAWR	11,000 lbs.	11,000 lbs.	11,000 lbs.	11,000 lbs.	11,000 lbs.	11,000 lbs.	11,000 lbs.	11,000 lbs.
Tag GAWR	—	—	—	—	—	—	4,000 lbs.	4,000 lbs.
GVWR	17,000 lbs.	17,000 lbs.	17,000 lbs.	17,000 lbs.	17,000 lbs.	17,000 lbs.	20,000 lbs.	20,000 lbs.
GCWR*	25,000 lbs.	25,000 lbs.	25,000 lbs.	25,000 lbs.	25,000 lbs.	25,000 lbs.	25,000 lbs.	25,000 lbs.
Approx. Unloaded Vehicle Wt.	14,231 lbs.	15,061 lbs.	14,751 lbs.	15,428 lbs.	15,556 lbs.	15,392 lbs.	16,767 lbs.	16,735 lbs.
Approx. Net Carrying Cap.	2,769 lbs.	1,939 lbs.	2,249 lbs.	1,572 lbs.	1,444 lbs.	1,608 lbs.	3,233 lbs.	3,256 lbs.

Lengths, Heights, Widths and Dry Weights are approximate. * Hitch Rating 4000 lbs.

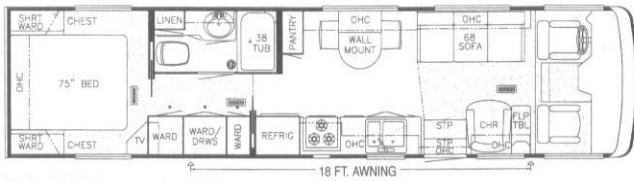
1998 Dutch Star Class A Motorhome Floor Plans & Options



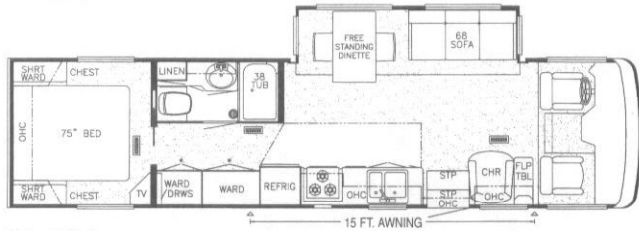
DA 3205



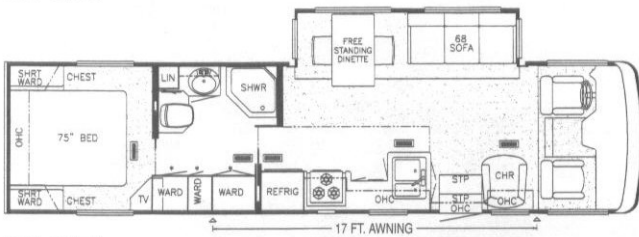
DA 3256



DA 3401



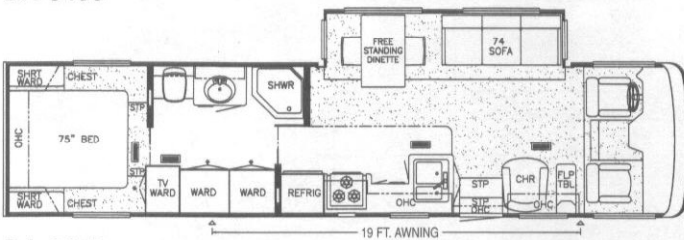
DA 3450



DA 3451



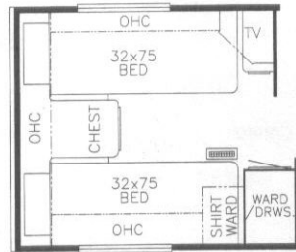
DA 3455



DA 3656



DA 3658



Option 8K088
75" Twin Beds
Available in Model:
DA 3205



Option 8K090
75" Twin Beds
Available in Models:
DA 3256 • 3401 • 3450
3451 • 3455



Option 8K091
75" Twin Beds
Available in Model:
DA 3656

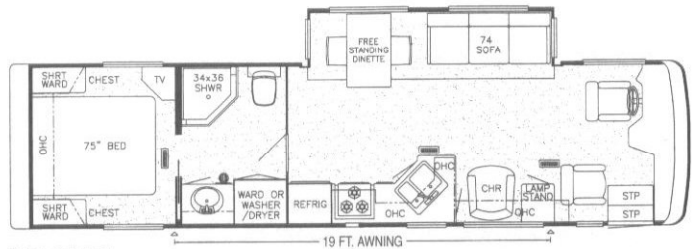
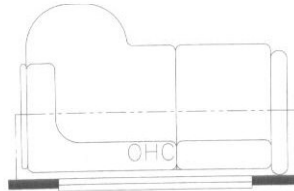


Option 8K089
75" Twin Beds
Available in Model:
DA 3658

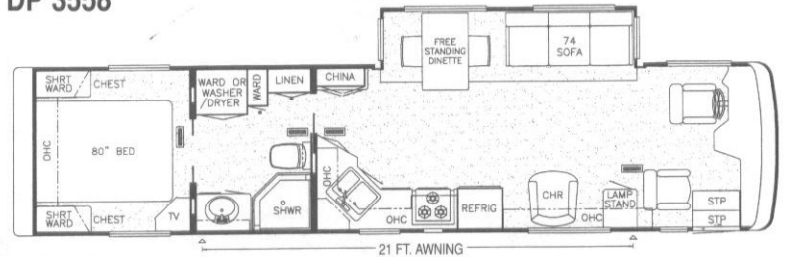
Prices, specifications and floorplans are subject to change at Newmar's discretion without prior written notice or obligation. Some floorplans may show optional chairs or end tables. See your dealer for availability.

1998 Dutch Star Diesel Pusher Floor Plans & Options

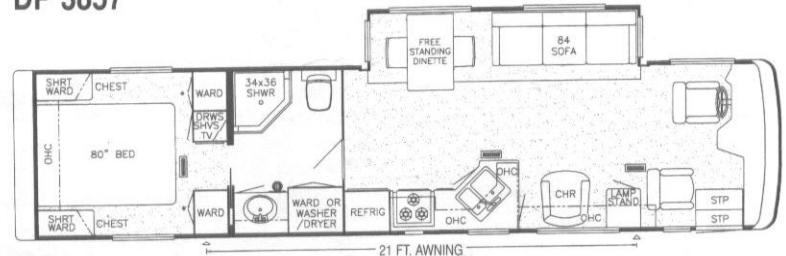
Option 8K910
L-sofa 66" Leather/Vinyl
w/incliner
Available in Models:
DP 3857 • 3858 • 3860
3865 • 3883
(not available w/center entry option)



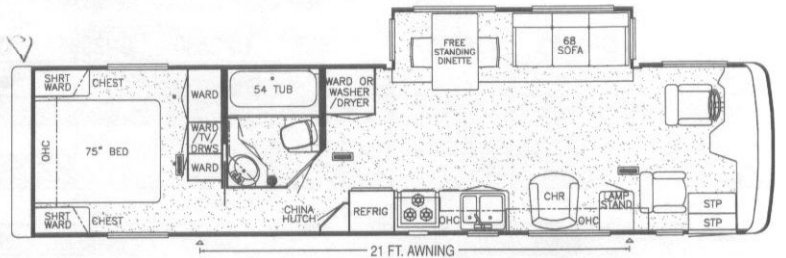
DP 3558



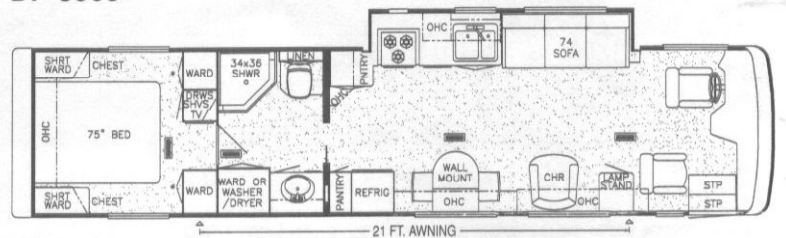
DP 3857



DP 3858



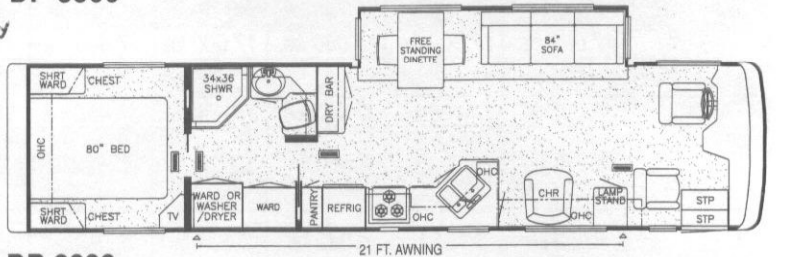
DP 3860



DP 3865



DP 3866



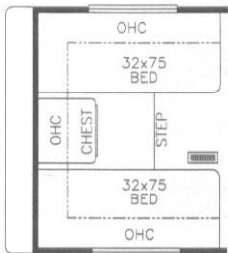
DP 3883



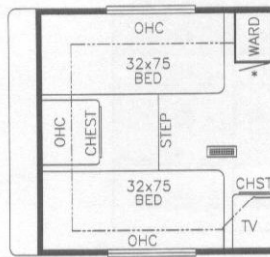
Option 8K104
80" Twin Beds
Available in Models:
DP 3857 • 3883



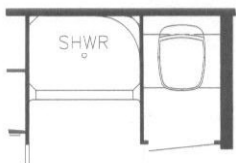
Option 8K102
80" Twin Beds
Available in Model:
DP 3558



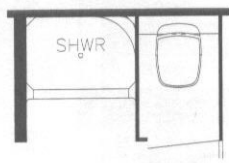
Option 8K103
75" Twin Beds
Available in Models:
DP 3858 • 3860 • 3865



Option 8K105
75" Twin Beds
Available in Model:
DP 3866



Option 8P204
Enclosed Stool Room
w/Straight shower
Available in Model:
DP 3865



Option 8P203
Enclosed Stool Room
w/Straight shower
Available in Models:
DP 3558 • 3858

Discover 1998 Dutch Star Diesel Pusher

the Dutch Star.

1998 STANDARDS

Air Conditioning & Heating

- Air Conditioner Central Penguin 13.5 BTU w/Heat Strip (1)
- Heat In Floor Ducted
- LP Leak Detector

Appliances & Accessories

- Cable TV Connection
- Carbon Monoxide Detector
- CB Antenna
- Microwave Oven 22" (except 3865, 3866)
- Microwave Oven Non-Convection 30" (3865, 3866)
- Range Cover Laminated w/Matching Countertop Material
- Range Hood w/Light & Fan (except

- Range Recessed Wedgewood 3 Burner w/Black Glass Oven Door
- Rear View Monitor System
- Refrigerator Dometic Double Door (8 cu. ft.)
- Stereo AM/FM Cassette w/Clock (in dash)
- TV Antenna w/Power Booster & 2 Jacks
- TV Color 19"
- VCR Prep w/TV Video Switch
- Water Heater 10 Gal. Gas/Electric w/Direct Spark Ignition

Cabinets & Furniture

- Chair Flexsteel Swivel Barrel
- Countertop Solid Surface Material in Kitchen w/Corian Edge & Stainless Steel Sink
- Countertop Solid Surface w/Corian Edge & Integrated Porcelain Lavatory Bowl in Bath
- Drawers w/Metal Guides & Side Rollers
- Front Seats Flexsteel Swivel/Recline w/3 Point Seat Belt
- Molded Silverware Divider Tray

- Oak Raised Panel Cabinet Doors
- Sofa Flexsteel

Chassis Features

- Chassis-Spartan Highlander 300 HP Raised Rail
- Air Brakes w/Automatic Slack Adjuster Front & Rear
- Back-Up Alarm
- Cruise Control
- Dash Heater/Air Conditioner High Output (1 on each side)
- Recessed Fuel Fill w/Locking Door
- Steering Wheel Tilt & Telescope
- Wheel Simulators, Stainless Steel

Electrical Features

- Battery Disconnect (coach battery)
- Battery, Thermoil (2-12 volt) On Pull-out Tray
- Converter 75 AMP w/Charger
- Electrical Service 50 AMP w/Flexible Cord
- Generator 6.5 KW Onan w/LP Conversion & Automatic Changeover
- Lights in Exterior Storage Compartments
- Midship Side Turn Signals

- Receipts 110 Volt w/Ground Fault Interrupter (interior & exterior)
- Solar Panel 5 Watt to Charge Chassis Battery
- Switch for Emergency Chassis Engine Start

Exterior Features

- Convex Exterior Mirrors (driver-side mount - passenger-front mount)
- Exterior Front & Rear Gel-Coated Fiberglass End Caps
- Exterior Sides Gel-Coated Fiberglass
- Hitch for Towing Car w/Wire Connector (class-2, 4000 lbs. rating)
- Jacks Hydraulic Leveling w/Joystick Controller
- Mud Flaps (front & rear)
- Roof Rack & Ladder
- Roof Rubber
- Slideout Large w/Patented Flat Floor (see floorplans for availability & layout)
- Undercoating

Interior Features

- Bedsread Quilted w/Reversed Sham & Accent Pillow
- Ceiling Woven Soft Touch
- Decorative Wall Clock & Mirror
- Floor Covering, Carpet Staintech, 45 oz. 100% Nylon Plush Saxony
- Floor Covering, Carpet w/High Density Pad
- Hardwood Trim on Front of Slideout
- Sink Cover, (1)
- Smoke Detector & 10 BC Fire Extinguisher
- Window Treatment Day/Night Pleated Shades & Lambrequins
- Window Treatment Mini Blind (kitchen)

Plumbing / Bath Features

- Bath Accessories White (2 towel bars, 1 tissue holder)
- Monitor Panel
- Stool Aqua Magic IV
- Tub/Shower Fiberglass w/Enclosure
- Winterize Convenience Package (w/water heater bypass)

Construction Features

- Insulation Fiberglass R7 Sidewalls & Floor, R11 Roof
- Insulation Foam 5/8" Laminated in Sidewalls & Ceiling
- Structure, 101" Widebody w/Bus Style Front Cap
- Structure, Aluminum Sidewalls & Roof, 16" on Center

Windows, Awnings & Vents

- Exterior Lighted Acrylic Assist Handle (at main entrance door)
- Front Entry Door w/12 Volt Powered Stepwell Cover
- Skylight in Bathroom w/Soft Shade
- Step 12 Volt Automatic
- Vent 12 Volt in Bath Area w/Wall Switch
- Windows Radius Safety Glass Dark Tinted

Bedroom Features

- Lifts for Convenient Storage Under Fixed Beds

Dutch Star® Diesel Pusher Freightliner Chassis Specifications

Model	DP3558	DP3857	DP3858	DP3860	DP3865	DP3866	DP3883
Chassis	Freightliner XC	Freightliner XC	Freightliner XC	Freightliner XC	Freightliner XC	Freightliner XC	Freightliner XC
Engine	CAT 300	CAT 300	CAT 300	CAT 300	CAT 300	CAT 300	CAT 300
Axle Ratio	4.63	4.63	4.63	4.63	4.63	4.63	4.63
Fuel Cap	100 Gal.	100 Gal.	100 Gal.	100 Gal.	100 Gal.	100 Gal.	100 Gal.
Wheel Base	216"	252"	252"	252"	252"	252"	252"
Front GAWR	9,000 lbs.	10,400 lbs.	10,400 lbs.	10,400 lbs.	10,400 lbs.	10,400 lbs.	10,400 lbs.
Rear GAWR	17,000 lbs.	17,000 lbs.	17,000 lbs.	17,000 lbs.	17,000 lbs.	17,000 lbs.	17,000 lbs.
GVWR	26,000 lbs.	27,400 lbs.	27,400 lbs.	27,400 lbs.	27,400 lbs.	27,400 lbs.	27,400 lbs.
GCWR*	31,000 lbs.	32,400 lbs.	32,400 lbs.	32,400 lbs.	32,400 lbs.	32,400 lbs.	32,400 lbs.
Approx. Unloaded Vehicle Wt.	21,075 lbs.	21,894 lbs.	21,958 lbs.	21,649 lbs.	21,747 lbs.	21,786 lbs.	21,975 lbs.
Approx. Net Carrying Cap.	4,925 lbs.	5,506 lbs.	5,442 lbs.	5,751 lbs.	5,653 lbs.	5,614 lbs.	5,425 lbs.

Lengths, Heights, Widths and Dry Weights are approximate.. * Hitch Rating 4000 lbs.

Dutch Star® Diesel Pusher Spartan Chassis Specifications

Model	DP3558	DP3857	DP3858	DP3860	DP3865	DP3866	DP3883
Chassis	Spartan IC	Spartan IC	Spartan IC	Spartan IC	Spartan IC	Spartan IC	Spartan IC
Engine	CUM 300	CUM 300	CUM 300	CUM 300	CUM 300	CUM 300	CUM 300
Axle Ratio	4.63	4.63	4.63	4.63	4.63	4.63	4.63
Fuel Cap	100 Gal.	100 Gal.	100 Gal.	100 Gal.	100 Gal.	100 Gal.	100 Gal.
Wheel Base	216"	252"	252"	252"	252"	252"	252"
Front GAWR	9,000 lbs.	10,400 lbs.	10,400 lbs.	10,400 lbs.	10,400 lbs.	10,400 lbs.	10,400 lbs.
Rear GAWR	17,000 lbs.	17,000 lbs.	17,000 lbs.	17,000 lbs.	17,000 lbs.	17,000 lbs.	17,000 lbs.
GVWR	26,000 lbs.	27,400 lbs.	27,400 lbs.	27,400 lbs.	27,400 lbs.	27,400 lbs.	27,400 lbs.
GCWR*	36,000 lbs.	37,400 lbs.	37,400 lbs.	37,400 lbs.	37,400 lbs.	37,400 lbs.	37,400 lbs.
Approx. Unloaded Vehicle Wt.	20,975 lbs.	21,794 lbs.	21,858 lbs.	21,549 lbs.	21,647 lbs.	21,686 lbs.	21,875 lbs.
Approx. Net Carrying Cap.	5,025 lbs.	5,606 lbs.	5,542 lbs.	5,851 lbs.	5,753 lbs.	5,714 lbs.	5,525 lbs.

Lengths, Heights, Widths and Dry Weights are approximate.. * Hitch Rating 4000 lbs.

1998 OPTIONS

Air Conditioning & Heating

- Air Conditioner Brisk Air 15M BTU w/Heat Strip in Place of 13.5 5 lbs.
- Air Conditioner Central Penguin 13.5M BTU w/Heat Strip (extra) 100 lbs.
- Auxiliary Heater in Bedroom 20 lbs.

Apliances & Accessories

- CB Radio 2 lbs.
- Cellular Telephone Antenna 1 lbs.
- Freezer Norcold AC/DC (on slides) in Exterior Storage Compartment 113 lbs.
- Horn (air) 5 lbs.
- Speaker Switch System (between TV & dash stereo) 5 lbs.
- Icemaker Added to Dometic Refrigerator (8 cu. ft.) 57 lbs.
- Icemaker U Line (except 3857, 3865, 3866) - 16 lbs.
- Microwave Oven Convection 22" w/3-Burner Hot Plate (except 3865, 3866) 13 lbs.
- Microwave Oven Convection 30" w/3-Burner Hot Plate 91 lbs.
- Refrigerator Dometic Double Door (10 cu. ft.) 2 lbs.
- Satellite Dish Prep Only - w/RG 6 Coaxial, Phone/TV Jack & 110 Volt Recept 0 lbs.
- Stereo AM/FM CD Player in Place of Standard Dash Stereo 24 lbs.
- TV Color 13" AC (in bedroom) 1 lbs.
- TV Jack for Exterior Use on Door Side 185 lbs.
- Washer/Dryer Compact 1-Piece (3857, 3858, 3860) 22 lbs.
- Washer/Dryer Prep (3857, 3858, 3860) 10 lbs.
- Water Heater 10 Gal. Gas/Electric, Ignition & Direct Spark Engine Assist 23 lbs.

Cabinets & Furniture

- Built-in Booth Dinette w/Drawers, in Place of Free Standing Table/Chairs 46 lbs.
- Chair Flexsteel High Back Recliner w/Headrest in Place of Standard Chair 56 lbs.
- Chair Flexsteel High Back Recliner w/Headrest Leather/Vinyl in Place of Standard Chair 73 lbs.
- Chair Flexsteel Large Free Standing Glider Leather/Vinyl in Place of Standard Chair 20 lbs.
- Dinette Chairs Fixed, 2 Extra 50 lbs.
- Dinette Table Hidden Leaf in Place of Free Standing Table 16 lbs.
- Front Seat 6-Way Power 38 lbs.
- Front Seats Flexsteel Leather/Vinyl w/6-Way Power Lumbar Support 75 lbs.
- Overhead Cabinet Added in Slideout (except 3865, 3866) 50 lbs.
- Sofa L-Lounge Leather/Vinyl w/Incliner in Place of Chair & Lamp Stand (except 3558, 3866) 8 lbs.
- Wood Doors & Shelves on China Cabinet in Place of Standard 75 lbs.

Chassis Features

- Optional Chassis-Freightliner X-Line 300 HP
- Independent Front Suspension for Spartan Highlander Chassis

Electrical Features

- Generator 7.0 KW Power Tech (diesel) on Slides in Place of Standard Generator 195 lbs.
- Generator 7.5 KW Onan (diesel) Quiet Series on Slides in Place of Standard Generator 230 lbs.
- Inverter 400 Watt (for dash TV & VCR) 10 lbs.

Approx. Weight

- Inverter/Converter (Heart Freedom 20) 50 lbs.
- Light Spot w/Remote Control 3 lbs.
- Lighting Fluorescent Recessed in Ceiling & Overhead Cabinets 1 lbs.
- Lights Docking 4 lbs.
- Lights Driving 2 lbs.
- Lights Exterior Security (1 on each side) 2 lbs.
- Switched Recept for Engine Block Heater 1 lbs.

Exterior Features

- Convex Exterior Mirrors w/Remote Control & Defrost, Front Mounted 4 lbs.
- Jacks Hydraulic Leveling w/"Touch" Manual Control 0 lbs.

Interior Features

- Floor Covering, Ceramic Tile in Bath Area 75 lbs.
- Floor Covering, Ceramic Tile in Kitchen Area (except 3865, 3866)] 35 lbs.
- Sun Shade on Side Window (specify quantity & location) 2 lbs.

Plumbing / Bath Features

- Sewage Holding Tank Rinse 1 lbs.
- Shower Exterior (on off door side) 2 lbs.
- Stool China w/Spray Attachment 31 lbs.
- Water Filtering System w/Drink Dispenser (kitchen) 5 lbs.

Construction Features

- CSA Approval for Canadian Dealers Only 0 lbs.

Windows, Awnings, & Vents

- Awning, Front Entrance Door A&E 12 lbs.
- Awning, Side A&E 9000 128 lbs.
- Awning, Slideout Cover A&E 25 lbs.
- Awning, Window A&E 9000 (specify location) 5 lbs.
- Door Bell 2 lbs.
- Door Driver's Side w/Power Window 50 lbs.
- Vent 12 Volt Fantastic w/Rain Sensor 11 lbs.
- Windows Radius Safety Glass Double Pane, Dark Tinted (except driver/passenger area) 93 lbs.

Bedroom Features

- Bed Twins 75" 102 lbs.

Dutch Star® Diesel Pusher Insulation "R" Values

Roof	Sidewalls	Floor
R17	R12	R12

Dutch Star® Diesel Pusher Sizes and Capacities

Model	DP3558	DP3857	DP3858	DP3860	DP3865	DP3866	DP3883
Approx. Overall Length	35'-0"	38'-0"	38'-0"	38'-0"	38'-0"	38'-0"	38'-0"
Overall Width	101"	101"	101"	101"	101"	101"	101"
Approx. Overall Height	11'-8"	11'-8"	11'-8"	11'-8"	11'-8"	11'-8"	11'-8"
Interior Width	95-1/2"	95-1/2"	95-1/2"	95-1/2"	95-1/2"	95-1/2"	95-1/2"
Interior Height	78"	78"	78"	78"	78"	78"	78"
Grey Tank	55 Gal.	55 Gal.	55 Gal.	55 Gal.	55 Gal.	55 Gal.	55 Gal.
Sewage Tank	55 Gal.	55 Gal.	55 Gal.	55 Gal.	55 Gal.	55 Gal.	55 Gal.
Water Tank	105 Gal.	105 Gal.	105 Gal.	105 Gal.	105 Gal.	105 Gal.	105 Gal.
L/P Tank	32 Gal.	32 Gal.	32 Gal.	32 Gal.	32 Gal.	32 Gal.	32 Gal.
Furnace BTU	35,000	40,000	40,000	40,000	40,000	40,000	40,000

Lengths, Heights, Widths and Dry Weights are approximate.



Discover the Newmar Difference.

1998 Dutch Star Class A Motorhomes



1998 Dutch Star® Class A Motorhome



1998 Dutch Star® Diesel Pusher Motorhome

Newmar Kountry Klub

Don't forget to check out the Klub—the Newmar Kountry Klub, that is. All you need for eligibility is to be a proud owner of any of the fine Newmar recreational vehicles.

We invite you to visit our state-of-the-art production facility in Nappanee, Indiana. Plant tours are offered at 10:00 a.m. and 1:00 p.m. Monday – Friday.

Compliments of:



An American Tradition of Excellence.

355 N DELAWARE ST • PO BOX 30

NAPPANEE IN 46550-0030

(219) 773-7791 • FAX (219) 773-2895

Visit Our Website At: <http://www.newmarcorp.com>